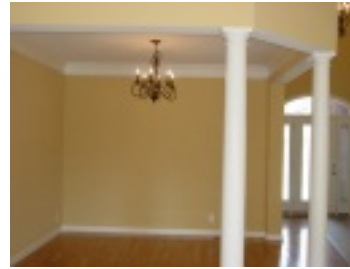
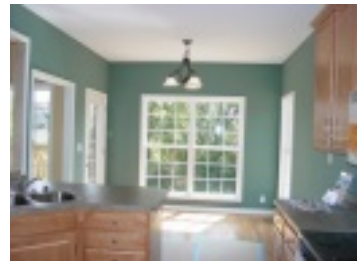


KEELING PARK



RE/MAX[®]
Associates



6507 Keeling Park Drive

Bedrooms: 3

Bath: 3

SqFt: 1,955

Price: \$269,900

- New Construction
- Located in Keeling Park in the heart of Fern Creek.
- A very open floor plan with a vaulted great room with fireplace open to a formal dining room, large vaulted foyer and kitchen with breakfast bar, custom cabinetry, top of the line stainless steel appliances and breakfast room .
- First floor master bedroom with hip vault tray ceiling.
- Master bath features double bowl vanity, separate shower and whirlpool bath, plus a large walk-in closet.
- An additional first floor bedroom, full bath and 1st floor laundry room.
- First floor features lots of custom mill work, hardwood and tile flooring.

- The second floor features a 3rd bedroom and full bath with tile flooring.
- Large deck on first floor level and 12x12 lower level patio at walkout basement
- Two car attached garage.
- Large deck on first floor level and 12' x 12' lower level patio at walkout basement



To view all of our listings, search the Louisville MLS, research a subdivision and more, please visit....

www.JohnMilliner.com