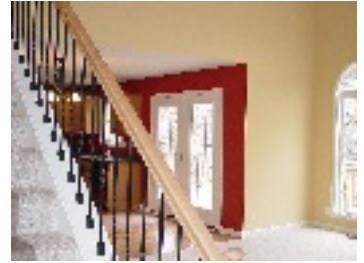
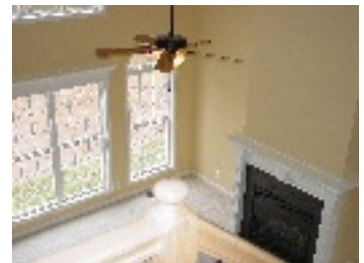


## ASHLAND



**RE/MAX**<sup>®</sup>  
Associates



**9213 Ashland Court Bedrooms: 3 Bath: 2.5 SqFt: 2,550 Price: \$359,900**

- A very popular 1-1/2 story with walkout basement.
- Master bedroom on 1st floor along with master bath with ceramic tile flooring, double vanity and separate shower and whirlpool tub.
- Open greatroom with fireplace and lots of windows overlooking an undeveloped common area.
- Custom kitchen with breakfast bar, stainless steel appliances and separate breakfast room.
- 2nd floor features 3 additional bedrooms and full tile bath. 1/2

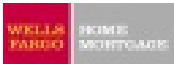
bath off hallway.

- This home has lots of hardwood, crown and trim.
- 3 car attached side entry garage.
- Large deck off the back.
- Lower level walkout with rough for full bath and ready to be finished.

To view all of our listings, search the Louisville MLS, research a subdivision and more, please visit....

**www.JohnMilliner.com**

Preferred Lenders



Shane Gilmet  
Office 502-479-1120



Each office independently owned and operated