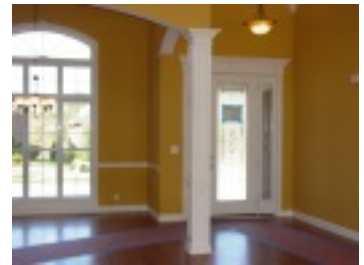
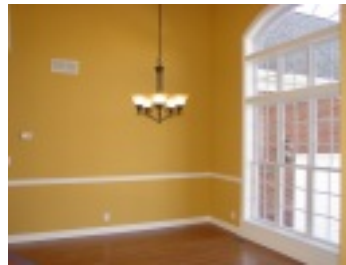
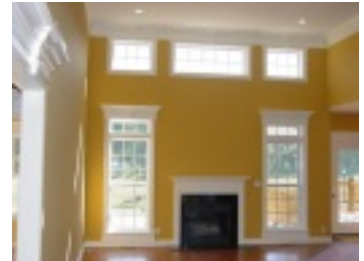


GARDINER PARK



402 Buckland Trace Bedrooms: 3 Bath: 2 SqFt: 2,015 Price: \$284,900

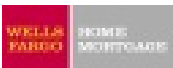
- New Construction
- All brick ranch with walkout basement.
- Lots of upgrades include a master shower with tile floor, hardwood in the kitchen, breakfast room, foyer, dining room, great room and hall.
- Granite countertops in kitchen with upgraded kitchen cabinets.
- Three piece crown molding, granite around fireplace,

- laundry room sink, upgraded kitchen appliances with stainless steel appliances.
- Upgraded kitchen sink with faucet.
- Full covered porch over deck area and lower level patio.

To view all of our listings, search the Louisville MLS, research a subdivision and more, please visit....

www.JohnMilliner.com

Preferred Lenders



Shane Gilmet
Office 502-479-1120



Each office independently owned and operated