



**JOHN MILLINER**

Office: 502-315-1321

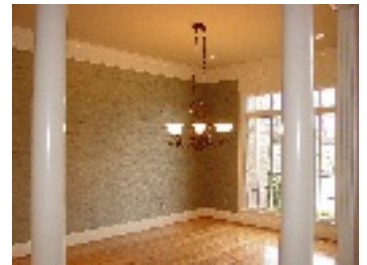
Cell: 502-552-2026

homes@johnmilliner.com

www.johnmilliner.com



# BEECH SPRING FARM



**4301 Hampton Creek Rd Bedrooms: 4 Bath: 4.5 SqFt: 5723 Price: \$849,000**

- Architectural Designed and custom built by Distinctive Designs of Louisville, Mike Perry Builder.
- This house has everything a buyer wants in a new home.
- Dramatic foyer opens to dining room and two story great room highlighted by fabulous custom millwork and double palladium style doors to a private screened in porch across the back of the house and open porch on the front of the home.
- There is an office/study off of the greatroom with lots of custom millwork.
- Top of the line GE appliances, granite countertops with breakfast bar, and custom cabinets by Mike's woodworking makes cooking in this kitchen a dream.
- Butler pantry between dining room and kitchen.
- The master bedroom has a double tray ceiling with a barrel vault and custom millwork and opens to a private screened porch.
- A master bath that you dream about with a large custom shower and whirlpool tub, double vanity with custom cabinets and millwork, and top of the line marble and tile work.

- Three large bedrooms of second floor with their own baths are reached from a large sitting area at the top of the stairs.
- The third bedroom also has sitting area.
- The lower level basement is finished with a family room/media room, billiard room, a large lounge area with a custom bar.
- A study/office, full bath and lots of closet and storage.
- Call listing agent for all the details on this Architecturally Designed Home!!!



To view all of our listings, search the Louisville MLS, research a subdivision and more, please visit....

**www.JohnMilliner.com**

Each office independently owned and operated