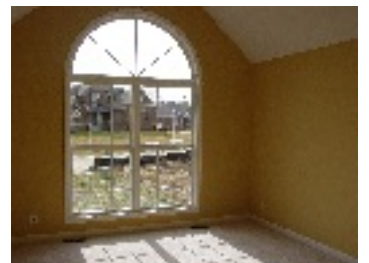
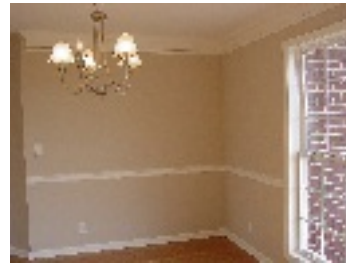




**ASHLEY HOLLOWAY**  
 Office: 502-315-1321  
 Cell: 502-664-1687  
 homes@ashleyholloway.com  
 www.ashleyholloway.com



# KEELING PLACE



**6807 O'Bryan Rd. Bedrooms:4 Bath: 2.5 SqFt: 2,250 Price: \$ 279,900**

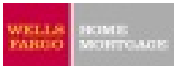
- The very popular all brick 1 1/2 story walk out.
- 1st floor master bedroom features vaulted ceiling and masterbath with ceramic tile floors.
- Double exteded vanity with separate whirlpool and shower.
- Plus large walkin closet.
- Large open two story vaulted great room with fireplace.
- Lots of windows.
- Fully equipped kitchen with custom cabinets, breakfast island and separate breakfast room.
- A half bath off entry.
- All rooms with hardwood floors include kitchen, breakfast room, 1/2 bath, formal dining room and foyer.

- 2nd floor features 3 bedrooms with lots of closet space.
- Full bath with ceramic tile flooring.
- Lower level basement is a full walkout and rough of bath.
- Two car attached garage.
- 12x18 deck across back of house with lower level patio.
- Lots of hardwood and trim!
- Optional finished basement, approx 1000 sqft features large bedroom with walkin closet, family room, game room and a full ceramic bath.....all for \$314,900



To view all of our listings, search the Louisville MLS, research a subdivision and more, please visit...  
**www.JohnMilliner.com**

Preferred Lenders



Shane Gilmet  
 Office 502-479-1120

Each office independently owned and operated