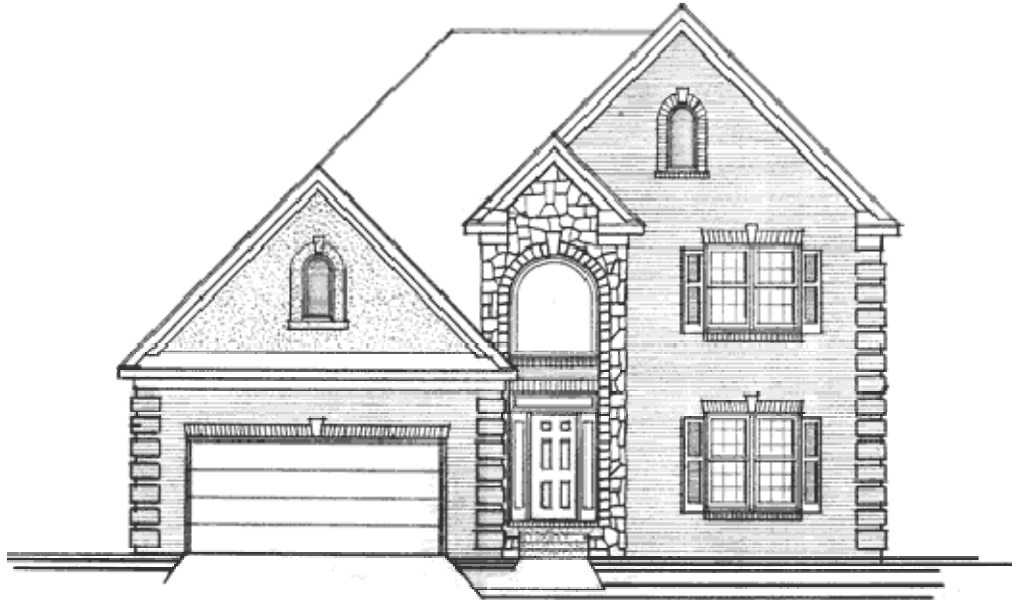


Keeling Park

Plan 3



Plan	SqFt	BR's	Style	Slab	Basement	Walkout	Option Pkg	Exteme Walkout
3	2280	4	1.5 Story	\$287,490	\$307,400	\$316,520	\$10,700	+5-10K
Alt 3	1810	2	Ranch	\$242,665	\$262,575	\$269,815	\$10,700	+5-10K

BASE FEATURES:

Dimensional Shingles

4 sides brick and siding in upper gables

Wood floor in Foyer, Kitchen, Breakfast Room

Standard size casing and base

Crown in Master and Foyer using Smaller format

Black appliances

Laminate counters

Acrylic panelized showers same as whirlpools

Heavier landscaping

Knob door hardware

OPTION PACKAGE:

Wood Floor in Dining.....\$1,000

Oversized Casing and Base.....\$2,200

Crown also in Great Room and Dining Room.....\$900

Stainless Steel Appliances\$500

Solid Surface Counters\$4,500

Black Mortar\$1,100

Level Handles on Doors.....\$500

Total Option Package:.....\$10,700

